



Product Catalogue

For Reference Only



CONTENTS

Last Update: Jun 2012

<u>Product Category</u>	<u>Section</u>
TOOLS & ACCESSORIES	A
Flashlights	A1
Driver Bits	A3
Multi - Bit Screwdriver	A4
Tape Measure	A4
Pro Level	A5
Caution Tape	A5
Long Handled Tool Bag	A5
Work Gloves	A6
2-Sided Foam Tape	A8
Drill Bits Kit	A8
Wet Dry Vac	A9
Grime Eater Hand Cleaner	A9
Universal Non-Metallic Bushings for Metal Studs	A10
Mechanical Lugs	A10
LIGHTING & VENTILATION	B
Incandescent Lamp Holders	B1
String Lights	B1
T8 Wrap Fixture	B2
T5 Fluorescent Undercabinet Lighting	B2
T8 Vapour Tight Fixture	B3
T5 HO Vapour Tight Fixture	B3
Xenon Task Lights	B3
180° Motion Sensor	B4
Industrial Ceiling Fan	B4
MR16 Pot Lights	B5
Low Voltage Pot Lights	B5
PAR20 Pot Lights	B6
Contractor Pack Pot Lights	B6
3pk LED Puck Lights	B7
Hi Bay Bracket	B7
Weatherproof Lighting	B8
Pot Light Trims	B9
Magic Lite Products	B12

<u>Product Category</u>	<u>Section</u>
WIRING ACCESSORIES	C
Cable Ties	C1
Electrical & Colour Coding Tape	C2
Chain	C2
Anti Short Bushings	C3
Twine	C3
Enclosures	C4
Meter Cabinets & Splitter Troughs	C5
Wire Marker Books	C6
NMD Connectors	C6
Cable Tie Mounting Bases	C6
Wire Lube	C7
Cable Tie with Mounting Hole	C7
Cable Straps	C7
Terminals	C8
Gang Vapour Barriers	C8
Duct Seal	C9
Ceiling Covers	C9
WIRING DEVICES	D
Specialty Switches	D1
Cord Ends	D3
GFCI - LED	D3
Tamper Resistant GFCI	D4
CONDUIT ACCESSORIES	E
Fasteners	E1
Conduit Accessories	E1
Conduit Fittings	E1

Flashlights

EPO412099 - 3AAA 3 LED Headlight with Adjustable Strap

- Water Resistant
- Lifetime bulb
- 50ft beam distance
- Swivel head



Cat. No.	Description	UPC
EPO412099	3AAA 3 LED Headlight with Adjustable Strap	035355420999

EPO412093 - 3AAA Multi Functional Headlight

- Water proof to IPX 3 standard
- 100ft / 30m distance
- Adjustable elastic head strap
- 4 Light Modes: Full White, 50% White, Red, Green LED
- 42 lumen rating on full LED



Cat. No.	Description	UPC
EPO412093	3AAA Multi Functional Headlight	035355420937

EPO414279 - 80 Lumen Hawkeye Flashlight

- 100ft beam distance
- Run time - 25 hours
- Shock proof - 3ft
- Aluminum / rubber construction
- Includes holster



Cat. No.	Description	UPC
EPO414279	80 Lumen Hawkeye Flashlight	035355442793

EPO412958 - 3AAA 45 Lumen Water Resistant Flashlight

- Water resistant
- Lifetime bulb
- 100ft beam distance
- Rubber construction
- Wrist lanyard included



Cat. No.	Description	UPC
EPO412958	3AAA 45 Lumen Water Resistant Flashlight	035355429589

EPO412968 - 3AA 80 Lumen Water Resistant Flashlight

- Water resistant
- Lifetime bulb
- 100ft beam distance
- Rubber construction
- Wrist lanyard included



Cat. No.	Description	UPC
EPO412968	3AA 80 Lumen Water Resistant Flashlight	035355429688

EPO414257 - 45 LED Multi Functional Flashlight

- 21 white LED Flashlight
- 18 White LED area / work light
- 6 red LED emergency flasher
- Strong magnetic base
- Aluminum construction
- Light mode: Flashlight, Area Light, Red Flashing, OFF



Cat. No.	Description	UPC
EPO414257	45 LED Multi Functional Flashlight	035355442571

EPO412510 - 4 LED Floating Flashlight

- Water resistant
- Floating
- 50ft beam distance
- Rubber grip
- Anti Roll rubber head



Cat. No.	Description	UPC
EPO412510	4 LED Flashlight	035355425109

Flashlights

EPO411080 - 500 Lumen Spotlight

- 3 super bright high flux LED
- Beam shot - over 500ft
- Run time - 2.5 hour
- Tough durable ABS body construction with TPR bezel and handle grip
- Trigger lock
- Stands for hands free operation
- Includes AC/DC charging adaptors



Cat. No.	Description	UPC
EPO411080	500 Lumen Spotlight	035355410808

EPO414225 - 400 Lumen Worklight

- 4 super bright high flux LED
- Area Light - 96 square feet
- Run time - 4 hours
- Shatterproof lens, shock proof - 10ft
- Built hand hook and magnets for hands free use
- AC rechargeable adapter



Cat. No.	Description	UPC
EPO414225	400 Lumen Worklight	035355442250

EPO410407 - Holster for 3AAA LED Flashlight



Cat. No.	Description	UPC
EPO410407	Holster for 3AAA LED Flashlight	035355404074

EPO461439 - Python LED Flashlight with Magnet -- 3AA, Black

- 45 lumens
- Anodized Aluminum construction
- Dual Functional: flexible hands free light or standard flashlight
- 17" flexible attachment for flex
- Magnet attachment for hands free



Cat. No.	Description	UPC
EPO461439	Python Flashlight with magnet -- 3AA, Black	035355614398

EPO471218 - 2 AAA LED Aluminum Penlight

- Aluminum alloy construction
- Handy metal clip



Cat. No.	Description	UPC
EPO471218	2 AAA Aluminum Penlight	035355712186

EPO474216 - 2 AA Aluminum 80 Lumen -- LED

- Aluminum alloy construction
- Tail cap push button switch
- 100ft beam of light
- Run time - 8 hour



Cat. No.	Description	UPC
EPO474216	2 AA Aluminum 80 Lumen - LED	035355742169

EPO474289 - 3 AAA Aluminum 200 Lumen -- LED

- High powered Cree solid state diode
- Anodized aluminum construction
- O-ring included to protect from dust & moisture
- Precision reflector - 80% of light concentrates on beam center
- Operates in temp less than -30F and above 130F
- Run time - 3 hours



Cat. No.	Description	UPC
EPO474289	3 AAA Aluminum 200 Lumen - LED	035355742893

Flashlights

EPO474291 - 4D / 6V 65 Lumens, Push Button, Hands Free Stand

- 65 Lumens, 3 Watt
- 4D
- 100ft beam
- Rubberized handle push button switch
- Ratcheting stand for hands-free use
- LED lantern



Cat. No.	Description	UPC
EPO474291	4D / 6V 65 Lumens, Push Button, Hands Free Stand	035355742916

EPO474750 - 4 AA 180 Lumen, Push Button, Industrial Tough

- High impact resin construction
- 1000ft beam
- Truespot reflector



Cat. No.	Description	UPC
EPO474750	4 AA 180 Lumen, Push Button, Industrial Tough	035355747508

EPO410296 - 3AAA Basic 5mm LED Head Lamp

- Run time - 28 hours
- Detachable main body
- Adjustable elastic head strap



Cat. No.	Description
EPO410296	3AAA Basic 5mm LED Head Lamp

EPO410290 - 3AAA Professional 1 Watt LED Head Lamp

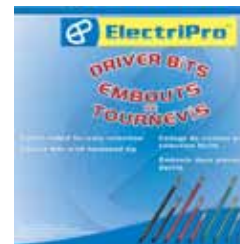
- High-end Luxeon LED
- Red Night vision setting
- Half & Full white light setting
- Adjustable elastic head strap



Cat. No.	Description
EPO410290	3AAA Professional 1 Watt LED Head Lamp

Driver Bits

- Colour coded for easy selection
- 2-piece bits
- Tips are made from hardened high speed steel
- Shafts can fit a ball-dent adapter
- Hex nut driver is magnetic



Cat No.	Description	UPC
EPOBIT1ROB3	3" Green Rob	625912701304
EPOBIT1ROB4	4" Green Rob	625912701403
EPOBIT1ROB6	6" Green Rob	625912701601
EPOBIT2ROB3	3" Red Rob	625912702301
EPOBIT2ROB4	4" Red Rob	625912702400
EPOBIT2ROB6	6" Red Rob	625912702605
EPOBIT3ROB4	4" Black Rob	625912703407
EPOBIT3ROB6	6" Black Rob	625912703608
EPOBIT2PH4	4" Blue Phil #2	625912702417
EPOBIT2PH6	6" Blue Phil #2	625912702615
EPOBIT516HEX	Short Yellow 5/16 Hex	625912706316
EPOBIT14HEX	Short Red 1/4 Hex	625912705319
EPOBITDBLB6	#2 Phil & 1/4" Slot - Blue & Yellow 6"	625912722064
EPOBITDBLB4	#2 Phil & 1/4" Slot - Blue & Yellow 4"	625912722040
EPOBITDBLR6	Red Rob & Green Rob - 6"	625912721265
EPOBITDBLR4	Red Rob & Green Rob - 4"	625912721241



15 in 1 Multi - Bit Screwdriver

- Saves time
- Unique cap design prevents blistering of palm
- Patented cartridge makes bits easy to find, easy to change, and easy to store
- Easy guide collar helps to maintain full contact between the bit and the screw for easier driving
- 14 most popular screwdriver tips including Robertson, Slot, Phillips, Torx
- End of shaft is a 1/4" hex nut driver
- Professional strength shaft for extra durability



Replacement Bits

- Bits are made from S2-grade steel to reduce stripping and ensure longer life
- Bits can also be used in any power drill



Cat. No.	Description	UPC
EPOMEGAPRO	15 in 1 Multi-Bit Screwdriver	831044002022
EPOMEGABIT	Replacement Bits (3 Bit-Pack)	831044009519

Tape Measure

- 7.5m / 25 ft total length
- Unique design with three locks
- Impact resistant with rubberized non-slip grip
- Rubber main lock increases durability
- Belt clip and plastic wrist strap
- Strong magnetic tip
- Tape extends over 7 ft before bending
- Quick tape return
- Stud markings



Cat. No.	Description	UPC
EPOTAPE25FT	25' Magnetic Tape Measure	622732211815

Pro Level

- Designed for portability, efficiency and durability
- CNC milled accuracy from billet 6061 aluminum alloy
- The level has an extra large "V" grooved edge that allows the level to maintain parallel on surfaces up to 10" in diameter
- Includes 3 precision vials, 0°, 90°, 45°
- Horizontal vial visible from 3 sides
- Includes template for box measurements
- Comes with 3 rare earth magnets that are part of the level
- The ElectriPro logo is etched onto the level itself



Cat. No.	Description	UPC
EPOLEVEL	PRO Electrician's Level	625912447783

Caution Tape

- Good quality barricade tape
- 2 Millimeter thick
- Can be easily cut for many jobs
- 3 Styles -- 3" Yellow 'Caution / Attention'
 - 3" Red 'Attention Electric Line Buried Below / Attention Ligne Electrique Enfoue'
 - 6" Yellow 'Attention Electric Line Buried Below / Attention Ligne Electrique Enfoue'



Cat. No.	Description	UPC
EPOTAPECAUTION	Yellow Caution/Attention Tape -- 3"x500FT -- 2 MIL Thick	000000999793
EPOTAPEBURIED	Red 'Buried Cable Below' Tape -- 3"x500FT -- 2 MIL Thick	000000999809
EPOTAPEYEL6	Yellow Buried Caution Tape -- 6"x500FT -- 2MIL Thick	000001001471

Long Handled Tool Bag

- Canvas tool bag with metal handle & frame
- Easy access pockets
- Velcro level holder
- Removable shoulder strap
- Dimensions 19.5" x 9.75" x 14.5"

Features

- Outside Front
 - > Front slash pocket with nylon strap and buckle closure with 4 billowed pockets
- Outside Back
 - > 7 back side pockets (5 billowed)
- Outside End 1
 - > Outside end pocket with hook & loop closure for bits
 - > Nylon strap with hook and "D" ring closure
 - > Metal tool/ruler holder
- Outside End 2
 - > Large billowed pocket
 - > Mesh water bottle holder
- Outside Top
 - > Hook & loop closures for long tools and levels
 - > Metal carry handle with comfortable foam grip
 - > Padded, adjustable shoulder strap
- Inside Back-side
 - > 5 billowed pockets
- Inside Ends (Both)
 - > 8 nylon loop straps for tool organization



Cat. No.	Description	UPC
EPOTOOLBAG	PRO Electrician's Long Handled Tool Bag	024099937726

Work Gloves

Basic

- Value pack of 12 pairs
- Durable for most general purpose jobs
- Outstanding abrasion resistance and greatly increased grip on wet or dry surfaces
- The cotton/poly blend is cool and comfortable
- Grip glove has over 500 PVC "dots"



Cat. No.	Description	Size	QTY Per Pack	UPC
EPOGLVCTNL	Basic Cotton	L	12 pairs	779406105458
EPOGLVGRIPL	Basic Cotton with Grip	L	12 pairs	779406105519

Mechanics

- Soft full-grain leather with Spandex[®] back, hooded finger tips & Velcro closure for snug fit
- Branded ElectriPro on Hang tag, top of glove and glove side tag
- Black and beige



Cat. No.	Description	Size	UPC
EPOGLV005L	Mechanics	L	065537814100
EPOGLV005XL	Mechanics	XL	065537814117

ProGrip

- Waffled neoprene material for an extremely light / high performance glove
- Soft & breathable Clarind[®] palm with silicone dotted palm and fingers
- Slip-on wrist, sporty detail package
- Plastic knuckle studs to provide protection to knuckles
- ElectriPro branded on hang tag as well as side tag of glove
- Black and grey



Cat. No.	Description	Size	UPC
EPOGLV011L	ProGrip	L	065537814179
EPOGLV011XL	ProGrip	XL	065537814186

Stealth

- Black on black nitrile coated gloves with a breathable nylon back
- ElectriPro branded on top of glove



Cat. No.	Description	Size	UPC
EPOGLV390L	Stealth	L	065537814407
EPOGLV390XL	Stealth	XL	065537814414

Work Gloves

Blue Chip

- Blue rubber coated palm, breathable knit cotton back
- ElectriPro branded on top of glove
- Blue & grey

Cat. No.	Description	Size	UPC
EPOGLV320L	Blue Chip	L	065537814223
EPOGLV320XL	Blue Chip	XL	065537814230



Hi-Vis

- High-visibility poly/cotton seamless knit with a rubber coated palm
- ElectriPro branded on top of glove
- High-vis yellow and black

Cat. No.	Description	Size	UPC
EPOGLV322L	Hi-Vis	L	065537814346
EPOGLV322XL	Hi-Vis	XL	065537814353



Red Hot

- Black rubber coated palm, breathable cotton and a napped thermal lining for cold conditions
- ElectriPro branded on top of glove
- Black & red

Cat. No.	Description	Size	UPC
EPOGLV321L	Red Hot	L	065537814285
EPOGLV321XL	Red Hot	XL	065537814292



2 Sided Foam Tape

- Double sided foam tape
- Multi - purpose
- EVA foam
- Dimensions - 24mm x 23m x 1.0mm
- 1" x 25yd x 0.04"

Cat. No.	Description	UPC
EPO2SIDETAPE	2-Sided Foam Tape	000001000535



Drill Bits Kit

- The most common sizes of industrial quality drill bits
- 20 piece set with 16 contractor grade insert bits and 4 Masonry bits

Cat. No.	Description	UPC
EPODRILLBITKIT	Hex Shank 20 Piece Drill Bits Kit in Pouch	042944280209



Wet Dry Vac

- 30 liter
- 4 peak HP
- 8 US gallon stainless steel tank
- On-board accessory storage
- 12 foot cord with cord wrap
- Large drain port
- Blower function
- Secure fit hose
- Heavy duty rear wheels
- Dust sealed switch
- Balanced top handle design
- Weather resistant construction
- Storage on head and casters
- 2-year warranty



Cat. No.	Description	UPC
EPOWDVAC	30 Lt/4HP wet/dry vaccum. 8 US Gallon stainless steel tank	899794001672

The product comes with the following accessories:

- 7' x 2-1/2" hose
- 2 extension wands
- Cartridge filter
- Dust bag
- Reusable foam sleeve
- 8" utility nozzle
- Crevice tool

Grime Eater Hand Cleaner

- Ideal for mobile trades people
- Contains natural citrus peel solvent
- Does not require water for rinsing
- Approved for use in food plants
- Registered cosmetic with Health Canada

Cat. No.	Description	UPC
EPO1301	Natural Orange Lotion Hand Cleanser, 455ML	068057000183



Universal Non-Metallic Bushings for Metal Studs

- Aid in protecting wire insulation against the sharp edges of metal studs

Cat No.	Description	UPC
EPOSTUBUSH	UNIVERSAL NON-METALLIC BUSHINGS FOR METAL STUDS	000001001792



Mechanical Lugs

- EPOLA6 / EPOLA2 / EPOLA10 / EPOLA20
 - Dual rated one conductor lugs
 - Constructed from high strength aluminum alloy
 - Electro-tin plated to provide low contact resistance
- EPOL2A20 / EPOL2A250
 - Dual rated two conductor lugs
 - Constructed from high strength aluminum alloy
 - Electro-tin plated to provide low contact resistance
- EPOLU35 / EPOLU70 / EPOLU225
 - High copper alloy terminal
 - Offset tongue for joining a wide range of cable to equipment pads or bar
 - Easy to install with screwdriver or wrench
 - Connector is reusable



Cat. No.	Description	UPC
EPOLA6	MECH LUG CU/AL 14 - 6 AWG	621945393349
EPOLA2	MECH LUG CU/AL 14 - 2 AWG	621945393332
EPOLA10	MECH LUG CU/AL 14 - 1/0 AWG	621945393325
EPOLA20	MECH LUG CU/AL 6 - 2/0 AWG	621945393301
EPOL2A20	MECH LUG CU/AL 14 - 2/0 AWG TWIN	621945393271
EPOL2A250	MECH LUG CU/AL 6 - 250 AWG TWIN	621945393264
EPOLU35	MECH LUG CU 14 - 6 AWG OFFSET	621945393233
EPOLU70	MECH LUG CU 8 - 2 AWG OFFSET	621945393226
EPOLU225	MECH LUG CU 2 - 4/0 AWG OFFSET	621945393219
EPOBAR	GROUNDING BAR 12" 14 - 6 AWG	621945393196

Incandescent Lampholders

- Plastic Lampholder
- White colour only
- CUL-US approved
- Keyless has 4 terminal screws
- 3' cord on pull chain

Cat. No.	Description	UPC
EPOPKLH	Incandescent Lamp Holder - Keyless	546454521215



String Lights

- UL & CUL listed
- Cord length is 100 feet with 10 PVC cages
- Each lampholder maximum wattage: 120V 150W
- String maximum wattage including any additional loads: 125V 12 A 1500W
- Cord type: 12/2, 600V
- Industrial grade
- Yellow cord and yellow PVC cages

Cat. No.	Description	UPC
EOSL100P	100 FT. String Light with 10 Cages	836631006087
EOSLCAGE	String Light Replacement Cage	836631006650



T8 Wrap Fixture

- Uses 2 x 32 T8 Lamps (not included)
- 48 3/4" L x 6 3/5" W x 2 1/2" H (1238 x 168 x 60mm)
- Electronic Ballast (120V AC 50/60 Hz)
- T8 ballast thermally protected
- Ballast is compliant to Consortium Energy Efficiency (CEE) requirements
- Energy efficient - packaging shows the CSA energy efficiency verification mark
- K12 Acrylic lens (will not yellow over time)
- Lens is easy to remove - no tools required
- **New Feature**
 - New wider end plates for the fixture eliminate the need for retainer clips
 - Rolled type edges on the fixture body
 - Smaller ballast "tunnel" in the fixture to allow the light to exit with less obstruction

Cat. No.	Description	Box Quantity	UPC
EPOWRAP	EPO T8 Wrap Fixture	6	7771250922205
EPOWRAPLENS	2 Lamp Clear Prismatic Acrylic Wrap Lens 48" REPLACEMENT FOR EPOWRAP	2	7771250923349



T5 Fluorescent Undercabinet Lighting

- 3-Wire system
- CUL-US approved & listed
- Cool-white colour only
- Built-in electronic ballast provides instant-on starting, no flickering and quiet operation
- Each fluorescent undercabinet system includes:

- | | |
|-----------------------|----------------------------|
| • 1 fixture | • 1 T5 fluorescent tube |
| • 2 mounting brackets | • 1 polycarbonate diffuser |
| • 2 screws | • 6-ft grounded power cord |
| • 1 end cap | • 1 link connector |

Accessories Information

- Compatible with whole ElectriPro T5 system product line
- Ability to connect up to 8 fixtures (200W max)



Cat. No.	Description	UPC
EPOUC1FT	8W	771250915795
EPOUC2FT	14W	771250915801
EPOUC4FT	28W	771250915825
EPOUCCONN12	12" Flexible Connector	771250915832
EPOUCSWBOX	Hardwire Box	771250915849



T8 Vapour Tight Fixture

- 120V, 60 Hz
- Enclosed and gasketed fixture
- Heavy duty high impact molded polycarbonate body and lens
- Highly efficient aluminum reflector
- Seamless silicone gasket
- Advance electric HPF ballast
- Thermally protected
- Instant start
- Min. start temp: -18°C (0°F)
- Power factor: >0.88
- Ballast factor: >0.5
- Sound rated A
- Rating: Type 1 outdoor
- Requires two T Lamps, 32W



Cat. No.	Description	UPC
EPOXLVT232120	T8 Vapor Tight, 2 Lamp, 4' Fixture 120V	771250922199
EPOVTLENS	T8 Vapor Tight Lens	000001000788

T5 HO Vapour Tight Fixture

- Advance ballast, T5 HO energy efficient electronic ballast
- 2 lamp, 4'54W T5
- Aluminum specular reflector
- Polycarbonate lens with PC lens clips and silicone gasket
- Vandal resistant, polycarbonate, UV stabilized housing
- Ceiling pendant or surface mount with stainless steel mounting brackets
- Electrical wire disconnect included
- IP-65 rated & certified



Cat. No.	Description	UPC
EPOVT254HO120	T5 HO Vapor Tight Fixture, 4-ft, 2xT5, IP-65, 120 V	061184979964
EPOVT254HOLENS	Replacement Lens for T5 Ho Vapor Tight Fixture	000001001266

Xenon Task Lights

- Aluminum extruded frame with knock out for 120V hard wire input
- Self-contained
- High-low dimmer switch
- Frosted glass diffuser secured with hinges
- 10,000 hour bulb life
- Safe 12V bulb replacement
- CUL listed



Cat. No.	Description	UPC
EPOXTL1HW	1 Lamp Xenon Task Light, 9" Long, White	779261001513
EPOXTL2HW	2 Lamp Xenon Task Light, 17 1/2" Long, White	779261001520
EPOXTL3HW	3 Lamp Xenon Task Light, 26" Long, White	779261001537
EPOXTL4HW	4 Lamp Xenon Task Light, 34 1/2" Long, White	779261001544
EPOXTLLAMP	Replacement Lamp For Xenon Task Light	779261001568

180° Motion Sensor

- Twin floodlight motion sensor
- 150W maximum
- Utilizes photocell sensors by deactivating the lights during the day
- Automatically activates dual security lights when motion is detected
- Convenient, dusk-to-dawn operation
- Adjustable time delay and sensitivity controls
- Durable construction that stands up to harsh weather conditions
- Suitable for wall or ceiling mounting
- CUL approved



Cat. No.	Description	UPC
EPOMSBLACK	Twin Motion Sensor Black, 180 Degree Range, 150 W	061184979285

Industrial Ceiling Fans

- White finish
- 56", 48" & 36" fan blades
- 16" rod
- Curved ends on fan blades allow for maximum airflow
- Proper installation can result in up to 30% savings on heating costs
- Ideal for industrial and commercial applications



Cat. No.	Canarm No.	Description	Colour	UPC
EPOCQ004	CQ004	CQ004 1 Fan 3 Speed	White	062345154589
EPOFRMC5	FRMC5	FRMC5 4 Fan Controller C/W F/R SW	White	0623451295704
EPOMC10	MC10	MC10 8 Fan Controller	White	062345604374
EPOMC15	MC15	MC15 12 Fan Controller	White	062345604381
EPOMC3	MC3	MC3 2 Fan Controller	White	062345604350
EPOMC5	MC5	MC5 4 Fan Controller	White	062345604637

Cat. No.	Canarm No.	Description	Colour	Airflow	Fan Size	Max RPM	Air Velocity 5 ft from fan	Air Delivery to floor	Rod Length	UPC
EPO56CP	CP56 C&P	56" Cord & Plug	White	Downdraft	56"	310	660 ft/min	20,500 cfm	16"	062345100043
EPO56FR	CP56 F&R	56" Forward & Reverse	White	Up / Downdraft	56"	310	660 ft/min	20,500 cfm	16"	062345100159
EPO36FR	CP36	36" Forward & Reverse	White	Up / Downdraft	36"	380	750 ft/min	1700 cfm	16"	062345100012
EPO48FR	CP48	48" Forward & Reverse	White	Up / Downdraft	48"	320	700 ft/min	13,000 cfm	16"	062345100029

Pot Lights

- Combo kit includes everything needed for installation
 - Housing, trim, hanger bars, lamp
- Residential grade
- Line voltage - No transformer required
- Can be used with a dimmer
- Lamp is a CSA approved MR16 50W flood with medium base
- Light output: 650 lumens
- Commercial size junction box with push-in terminals
- 4" white gimbal trim or 4" brushed nickel gimbal trim
- IC unit features an ultra-compact air tight housing
- Vapour barrier made from UL recognized PVC material rated to 90°C
- Vapour barrier includes flat flange to allow secure to fit joists



Cat. No.	Description	UPC
EPOPOT4W	Pot light combo with 4" white trim and lamp - New Construction	771250913845
EPOPOT4WIC	Pot light combo with 4" white trim and lamp -	771250913838
EPOPOT4RTO	Pot light combo with 4" white trim and lamp -	771250916839
EPOPOTVBE	Pot light Vapour Barrier Extender	771250916846
EPOPOT4BN	Pot light combo with 4" brushed nickel trim and lamp - New Construction	771250918109
EPOPOT4BNIC	Pot light combo with 4" brushed nickel and	771250918116
EPOPOT4BNRTO	Pot light combo with 4" brushed nickel and lamp - Retro-Fit	771250918123

Low Voltage Pot Lights

- Low voltage (12V)
- Housings are available in New Construction, Insulated Ceiling and Retro-Fit
- The housing comes with lamps. This is different from the other EPO Potlights
- Trims available are the white gimbal style, same as the other EPO Potlight trims
- Designed for residential and commercial applications
- LIFETIME WARRANTY ON ALL MAGNETIC TRANSFORMERS
- The retro-fit housing can be converted to new construction use by using the pre-mounting plate (EPOPOT4LVP)
 - Contractors in some regions do not use the retro housing for all new construction and install the pre-mounting plate only during the initial rough in stage. They then return and install the retro housing and trim after the drywall has been installed.
- The pre-mounting plate is NOT required for use with the retro housing in true retrofit installations



Cat. No.	Description	UPC
EPOPOT4LVA	POT4LVA New Construction Housing Only With Lamp	771250430458
EPOPOT4LVB	POT4LVB LV Insulated Housing Only With Lamp	771250430465
EPOPOT4LVC	POT4LVC LV Retro Housing Only With Lamp	771250430472
EPOPOT4LVP	POT4LVP Plate For LV Retro EPOPOT4LVC	771250430489
EPOPOT4LV1	POT4LV1 White Gimbal Trim for LV Pots	771250430496



PAR20 Pot Lights

- Combo kit includes everything needed for installation
 - Housing, trim, hanger bars, lamp
- Residential grade
- Line voltage - No transformer required
- Can be used with a dimmer
- Lamp is a CSA approved PAR20 50W flood with medium base
- Commercial size junction box with push-in terminals
- 4" white gimbal trim or 4" brushed nickel gimbal trim
- IC unit features an ultra-compact air tight housing

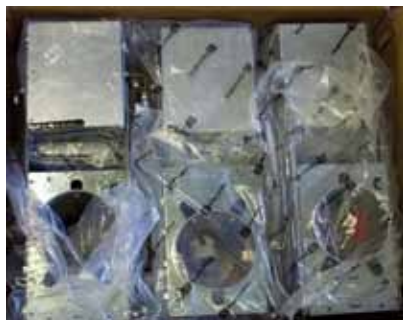


Cat. No.	Description	UPC
EPOPOT4WPAR20	PAR20 Pot Light Combo with 4" White Trim and Lamp - New Construction	771250920362
EPOPOT4WICPAR20	PAR20 Pot Light Combo with 4" White Trim and Lamp - IC	771250920379
EPOPOT4BNPAR20	PAR20 Pot Light Combo with 4" Brushed Nickel Trim and Lamp - New Construction	771250920393
EPOPOT4BNICPAR20	PAR20 Pot Light Combo with 4" Brushed Nickel Trim and Lamp - IC	771250920409
EPOPOT4WRTOPAR20*	PAR20 Pot Light 4" Retro-Fit Kit - White	771250920386
EPOPOT4BNRTOPAR20*	PAR20 Pot Light 4" Retro-Fit Kit - Brushed Nickel	771250920416

Contractor Pack Pot Lights - Trim & Housing Sold Separately

- The 4" housings are sold individually
- The trims are also sold individually - White or Brushed Nickel
- The housings are available in Retro Fit, New Construction and New Construction for IC applications
- The trims are available in medium base MR16 or PAR20 - 50W lamps
- Same housing can be used for MR16 and PAR20

Cat. No.	Description	UPC
EPOPOT4NC	New Construction Potlight Housing, 4"	000001001693
EPOPOT4IC	Insulated Ceiling Potlight Housing, 4"	000001001709
EPOPOT4RTO	Retro-Fit Potlight Housing, 4"	000001001716
EPOPOT4MRWH	Medium Base, MR16 Lamp and White Trim	000001001723
EPOPOT4MRBN	Medium Base, MR16 Lamp and Brushed Nickel Trim	000001001730
EPOPOT4PARWH	Medium Base, PAR20 Lamp and White Trim	000001001747
EPOPOT4PARBN	Medium Base, PAR20 Lamp and Brushed Nickel	000001001754
EPOPOT4PARWHA	Medium Base, PAR20 Lamp and White Trim	771250923196



3pk LED Puck Lights

- Three LED Puck Lights ideal for under cabinets offering shadow-free lighting in kitchens and work areas, wall units, bookcases, over counter tops, bars and hard to reach areas
- Provide task or accent illumination in residential and commercial indoor applications
- All LED puck lights can be surface mounted or recessed
- Available in three colors: Black, White and Matte Nickel
- Tempered glass shield
- 50,000 hour average rated life per LED
- Linkable
- LEDs are cool to the touch
- Pucks will not discolor or overheat
- Warm white light
- Opal lens for even lighting
- Not for use with dimmer
- Energy consumption is 1W per puck
- Light output is 50 lumens per LED
- Maximum distance from the driver puck to last puck is 10m (33 feet)
- Operating temperature: -20°C ~ +55°C
- 120V AC / 12V DC



Cat. No.	Description	UPC
EPOUCPLED3BK	UCP-LED-3BK 3-Puck LED Light System with Black Trims	771250922113
EPOUCPLED3WH	UCP-LED-3WH 3-Puck LED Light System with White Trims	771250922151
EPOUCPLED3MN	UCP-LED-3MN 3-Puck LED Light System with Matte Nickel Trims	771250922137
EPOLEDHWB12WH	LED-HWB12-WH	771250915955

Hi Bay Bracket

- Can be used with all Hi Bay, Low Bay and Job Site Lighting Fixtures
- For use in commercial applications and in warehouses
- Holds up to 100 lbs / 49 kg
- Made from hardened carbon steel
- Easy to install
 - ↳ Screw bracket directly into corrugated ceiling and hook the fixture in the loop



Cat. No.	Description	UPC
EPOSBRACKET100	Corrugated Steel Roof Bracket	771250919991

Weatherproof Lighting

- Some products are DIE CAST ALUMINUM and have an aluminum / grey finish
- Some other products have a painted silver grey and painted bronze finish
- NOTE: round boxes come complete with a stamped aluminum cover and gasket

Cat. No.	Description	UPC
EPOWC1	WC1 1 HOLE ROUND WEATHERPROOF COVER	61184988751
EPOWC3	WC2 3 HOLE ROUND WEATHERPROOF COVER	61184988768
EPOWCJAR	WCJAR CEILING MT WPF FIXTURE	61184988775
EPOWCJARG	WWJARG WALL MOUNT WPF FIXTURE WITH GUARD	61184988782
EPOWFS1	WFS1 1/2 FS TYPE WEATHERPROOF BOX	61184988799
EPOWFS2	WFS2 3/4 FS TYPE WEATHERPROOF BOX	61184988805
EPOWFSS1	WFSS1 1/2 FSS TYPE WEATHERPROOF BOX	61184988812
EPOWGLOBE	WGLOBE GLOBE ONLY FOR WPF FIXTURES	61184988829
EPOWGUARD	WGUARD GUARD ONLY FOR WPF FIXTURES	61184988836
EPOWLH	WLH WEATHERPROOF LAMPHOLDER WITH 1/2 STEM	61184988843
EPOWPLG1	WPLG1 1/2 PLUG FOR WEATHERPROOF BOXES	61184988850
EPOWPLG1S	WPLG1S 1/2 SHOULDER PLUG FOR WPF BOXES	61184988867
EPOWPLG2	WPLG2 3/4 PLUG FOR WEATHERPROOF BOXES	61184988874
EPOWQTZ1	WQTZ1 500W QUARTZ FIXTURE WITH LAMP	61184988881
EPOWRB1	WRB1 1/2 ROUND WEATHERPROOF BOX W/COVER	61184988898
EPOWRB2	WRB2 3/4 ROUND WEATHERPROOF BOX W/COVER	61184988904
EPOWWJARG	WCJARG CEILING MT WPF FIXT WITH GUARD	61184988911



EPOWWJARG



EPOWCJARG



EPOWGUARD



EPOWCJAR



EPOWGLOBE



EPOWQTZ1



EPOWPLG1



EPOWPLG1S



EPOWPLG2



EPOWRB1



EPOWRB2



EPOWFSS1



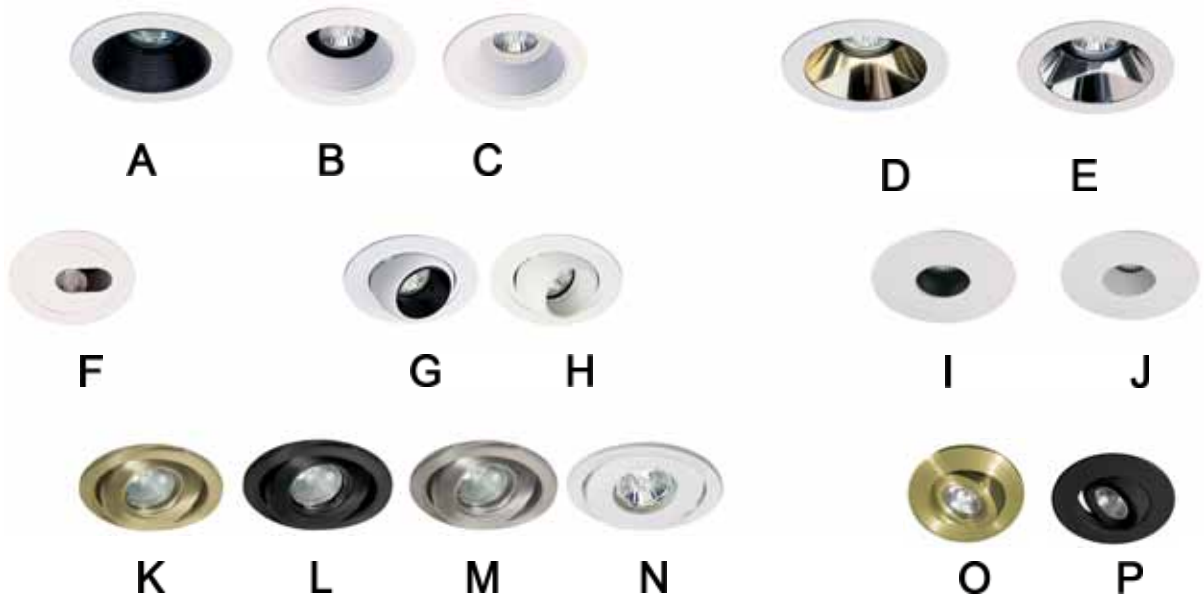
EPOWC1



EPOWC3

MR16 & PAR20 Potlight Trims

Image Reference	Cat No.	Description	UPC
A	EPOGRTH01BK	4" Round stepped black metal baffle with white trim ring. MR16/MR16 E26, 75W max.	771250301031
B	EPOGRTH01WH	4" Round stepped white metal baffle with black ring. MR16/MR16 E26, 75W max.	771250301048
C	EPOGRTH01WHWH	4" Round stepped white metal baffle with white ring. MR16/MR16 E26, 75W max.	771250912671
D	EPOGRTH02G	4" Round specular gold baffle with white ring. MR16/MR16 E26, 75W max.	771250301062
E	EPOGRTH02S	4" Round specular chrome baffle with white ring. MR16/MR16 E26, 75W max.	771250301055
F	EPOGRTH03	4" White adjustable slot aperture. MR16 75W max.; MR16 E26, 50W max.	771250301079
G	EPOGRTH04BK	4" Eyeball trim with white baffle. MR16 50W max.	771250301086
H	EPOGRTH04WH	4" Eyeball trim with black baffle. MR16 50W max.	771250301468
I	EPOGRTH05BK	4" Narrow beam black baffle. MR16 50W max.	771250301093
J	EPOGRTH05WH	4" Narrow beam white baffle. MR16 50W max.	771250912787
K	EPOGRTH18NBBBMR16	4" Tilting round brushed brass gimbal ring. MR16 75W max. / CFL11W	771250911186
L	EPOGRTH18NBBKMR16	4" Tilting round black gimbal ring. MR16 75W max. / CFL11W	771250911100
M	EPOGRTH18NBBNMR16	4" Tilting round brushed nickel gimbal ring. MR16 75W max. / CFL 11W	771250911162
N	EPOGRTHN18BWHMR16	4" Tilting round white gimbal ring. MR16 75W max. / CFL11W	771250911124
O	EPOGRTH18RBB	4" Rear loading tilting round brushed brass gimbal ring, 2 clips. MR16 / MR16 E26 75W max. / CFL 11W	771250923141
P	EPOGRTH18RBK	4" Rear loading tilting round black gimbal ring, 2 clips. MR16 / MR16 E26 75W max. / CFL 11W	771250910448



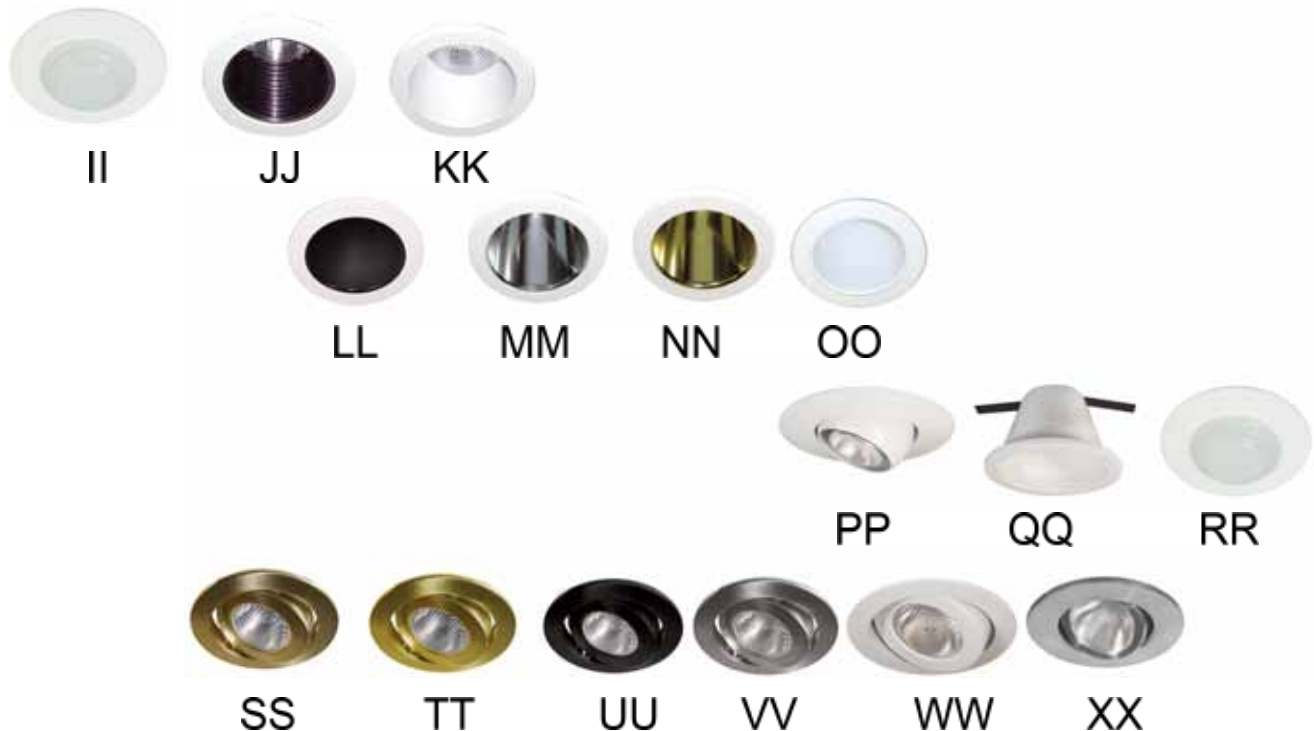
MR16 & PAR20 Potlight Trims

Image Reference	Cat No.	Description	UPC
Q	EPOGRTH18RSTS	4" Rear loading tilting round stainless steel gimbal ring, 2 clips. MR16 / MR16 E26 75W max. / CFL 11W	771250912855
R	EPOGRTH18R3AB	4" Rear loading tilting round antique brass gimbal ring, 3 clips. MR16 / MR16 E26, 75W max. / CFL 11W	771250912794
S	EPOGRTHR3BK	4" Rear loading tilting round black gimbal ring, 3 clips. MR16 / MR16 E26, 75W max. / CFL 11W	771250915917
T	EPOGRTH18R3BN	4" Rear loading tilting round brushed nickel gimbal ring, 3 clips. MR16 / MR16 E26, 75W max. / CFL 11W	771250915924
U	EPOGRTH18R3FWH	4" Rear loading tilting round flat white gimbal ring, 3 clips. MR16 / MR16 E26, 75W max. / CFL 11W	771250920751
V	EPOGRTH18R3MIV	4" Rear loading tilting round matte ivory gimbal ring, 3 clips. MR16 / MR16 E26, 75W max. / CFL 11W	771250916853
W	EPOGRTH18R3STS	4" Rear loading tilting round stainless steel gimbal ring, 3 clips. MR16 / MR16 E26, 75W max. / CFL 11W	771250918901
X	EPOGRTH19WH	4" White egress/regress rotating down light. MR16 / MR16 E26, 50W max.	771250900722
Y	EPOGRTH24BK	4" Retractable black metal trim. MR16 75W max.	771250912800
Z	EPOGRTH24BN	4" Retractable brushed nickel metal trim. MR16 75W max.	771250906144
AA	EPOGRTH24CH	4" Retractable chrome metal trim. MR16 75W max.	771250912817
BB	EPOGRTH24PB	4" Retractable polished brass metal trim. MR16 75W max.	771250301444
CC	EPOGRTH24WH	4" Retractable white metal trim. MR16 75W max.	771250301437
DD	EPOGRTH313FWH	4" Tilting round flate white gimbal ring. MR16 / MR16 E26, 50W max.	771250920744
EE	EPOGRTH313MIV	4" Tilting round matte ivory gimbal ring. MR16 / MR16 E26, 50W max.	771250910462
FF	EPOHV4TH4013BN	4" Brushed nickel trim with frosted glass lens and gasket. MR16 / MR16 E26, 35W max. / CFQ13W/GX23	771250917249
GG	EPOHV4TH4013CH	4" Brushed nickel trim with frosted glass lens and gasket. MR16 / MR16 E26, 35W max. / CFQ13W/GX23	771250918505
HH	EPOHV4TH4013WH	4" White trim with frosted glass lens and gasket. MR16 / MR16 E26, 35W max. / CFQ13W/GX23	771250906106



MR16 & PAR20 Potlight Trims

Image Reference	Cat No.	Description	UPC
II	EPOHV4TH4019WH	4" White trim with frosted glass lens and gasket. MR16 / MR16 E26, 35W max. / CFQ13W/GX23	771250911506
JJ	EPOHV4TH4001BK	4" Stepped black metal baffle with white trim ring. R20 / PAR20, 50W max. / CFQ13W/GX23	771250806031
KK	EPOHV4TH4001WH	4" Stepped white metal baffle with white trim ring. R20 / PAR20, 50W max. / CFQ13W/GX23	771250806048
LL	EPOHV4TH4002BK	4" Smooth black baffle with white trim ring. R20 / PAR20, 50W max. / CFQ13W/GX23	771250806055
MM	EPOHV4TH4002CH	4" Smooth chrome baffle with white trim ring. R20 / PAR20, 50W max. / CFQ13W/GX23	771250806079
NN	EPOHV4TH4002PB	4" Smooth polished brass baffle with white trim ring. R20 / PAR20, 50W max. / CFQ13W/GX23	771250806086
OO	EPOHV4TH4002WH	4" Smooth white baffle with white trim ring. R20 / PAR20, 50W max. / CFQ13W/GX23	771250806062
PP	EPOHV4TH4004WH	4" White tilting eyeball trim. R20 / PAR20, 50W max.	771250806109
QQ	EPOHV4TH4007WH	4" Smooth white airtight baffle. PAR30 75W / BR30 65W / CFL 11W. max.	771250904553
RR	EPOHV4TH4014WH	4" White trim with frosted glass lens and gasket. PAR20 35W max. / CFQ13W/GX23	771250911476
SS	EPOHV4TH4018AB	4" Tilting round antique brass gimbal ring. PAR20, 50W max.	771250911483
TT	EPOHV4TH4018BB	4" Tilting round brushed brass brass gimbal ring. PAR20, 50W max.	771250911216
UU	EPOHV4TH4018BK	4" Tilting round black gimbal ring. PAR20, 50W max.	771250912725
VV	EPOHV4TH4018BN	4" Tilting round brushed nickel gimbal ring. PAR20, 50W max.	771250910721
WW	EPOHV4TH4018WH	4" Tilting round white gimbal ring. PAR20, 50W max.	771250806116
XX	EPOHV4TH4018RSTS	4" Tilting round stainless steel, rear loading gimbal ring. PAR20, 50W max.	771250911490



Magic Lite Products

Cat. No.	Description	UPC
XENON TASK LIGHT		
MGLXTL1HW	1 LAMP XENON TASK LIGHT 9" LONG, WHITE	779261010003
MGLXTL2HW	2 LAMP XENON TASK LIGHT 17 ½" LONG, WHITE	779261010010
MGLXTL3HW	3 LAMP XENON TASK LIGHT 26" LONG, WHITE	779261010027
MGLXTL4HWWH	4 LAMP XENON TASK LIGHT 34 ½" LONG, WHITE	779261010065
MGLXTL5HWWH	5 LAMP XENON TASK LIGHT 38 ½" LONG, WHITE	779261001155
MGLXTLBULB	REPLACEMENT LAMP FOR XENON TASK LIGHT	779261001162
XENON MINI LIGHT		
MGLXMLK3BLACK	XENON MINI LIGHT, 3X18W, 60W TRANSFORMER, BLACK	779261001155
MGLXMLK3WHITE	XENON MINI LIGHT, 3X18W, 60W TRANSFORMER, WHITE	779261001162
BRICK LIGHT CONCRETE CAP		
MGLBLCC	CONCRETE CAP FOR XENON OR BRICK LIGHT	779261002329
XENON BRICK LIGHT		
MGLXBLLAL	XENON BRICK LIGHT, LOUVRE COVER, ALUMINUM	779261002237
MGLXBLLBK	XENON BRICK LIGHT, LOUVRE COVER, BLACK	779261002213
MGLXBLLWH	XENON BRICK LIGHT, LOUVRE COVER, WHITE	779261002206
LED MINIDISC LIGHT		
MGLLEDMDWHAL	LED MINIDISC LIGHT, 12V, ALUMINUM, WHITE LED 7000K	779261060008
MGLLEDMDWHBK	LED MINIDISC LIGHT, 12V, BLACK, WHITE LED 7000K	779261060152
MGLLEDMDWHSS	LED MINIDISC LIGHT, 12V, STAINLESS STEEL, WHITE LED 7000K	779261060527
MGLLEDMDCF	CONCRETE FORM FOR LED MINIDISC LIGHT	779261060206
MGLLEDDR1220WHW	LED DRIVER, 12V, DC 20W, HARDWIRE, SUPPLIER IN A JUNCTION BOX	779261008123
MGLLEDDR1260W	LED DRIVER, 12V, DC 60W, HARDWIRE, OUTDOOR	779261060213
MGLLW18GCL2	INSTALLATION WIRE, FOR LED MINIDISC LIGHT, IN WALL APPLICATIONS	779261060220
MGLLW18GBUR	INSTALLATION WIRE, FOR LED MINIDISC LIGHT, BURIAL APPLICATIONS	779261060237
LED MINI STAR		
MGLLEDMS3WH	LED MINI STAR KIT, 3X3.5W, 2700K, WHITE INCL 18W, 24V DC	779261003074
LED BRICK LIGHT		
MGLLEDBLWHLAL	LED BRICK LIGHT, WHITE LED, LOUVRE COVER ALUMINUM	779261007102
MGLLEDBLWHLWH	LED BRICK LIGHT, WHITE LED, LOUVRE COVER WHITE	779261007133
MGLLEDBLWHLBK	LED BRICK LIGHT, WHITE LED, LOUVRE COVER, BLACK	779261007119



Cable Ties

- High quality
- Great value
- Plastic barb
- Lengths from 4" to 14"
- Bundling from 5/8" to 4" diameter
- Tensile strengths from 18lb. to 20lb.

Cat. No.	Length	Pkg Qty	Bundle Diameter	Width	Tensile Strength	UPC
Indoor						
EPOCTI4C	4"	100	5/8"	.100"	18 lb	786210921464
EPOCTI5C	5"	100	1-1/4"	.130"	30 lb	786210921471
EPOCTI7C	7"	100	1-3/4"	.187"	50 lb	786210921488
EPOCTI11C	11"	100	3"	.187"	50 lb	786210921495
EPOCTI14C50	14"	100	4"	.187"	50 lb	786210921501
EPOCTI14C120	14"	100	4"	.300"	120 lb	786210921518
Outdoor						
EPOCTO4C	4"	100	5/8"	.100"	18 lb	786210921600
EPOCTO5C	5"	100	1-1/4"	.130"	30 lb	786210921617
EPOCTO7C	7"	100	1-3/4"	.187"	50 lb	786210921624
EPOCTO11C	11"	100	3"	.187"	50 lb	786210921631
EPOCTO14C50	14"	100	4"	.187"	50 lb	786210921693
EPOCTO14C120	14"	100	4"	.300"	120 lb	786210921723
Indoor Bulk						
EPOCTI4M	4"	1,000	5/8"	.100"	18 lb	786210921525
EPOCTI5M	5"	1,000	1-1/4"	.130"	30 lb	786210921532
EPOCTI7M	7"	1,000	1-3/4"	.187"	50 lb	786210921549
EPOCTI11V	11"	500	3"	.187"	50 lb	786210921556
EPOCTI14V50	14"	500	4"	.187"	50 lb	786210921594
Outdoor Bulk						
EPOCTO4M	4"	1,000	5/8"	.100"	18 lb	786210921747
EPOCTO5M	5"	1,000	1-1/4"	.130"	30 lb	786210921754
EPOCTO7M	7"	1,000	1-3/4"	.187"	50 lb	786210921778
EPOCTO11V	11"	500	3"	.187"	50 lb	786210921785
EPOCTO14V50	14"	500	4"	.187"	50 lb	786210921792



Electrical & Colour Coding Tape

EFLEX tape is a high quality and economical general-purpose vinyl insulating tape. It has excellent resistance to abrasion, moisture, alkalies, acid and varying weather conditions (including sunlight). This PVC tape is comfortable and provides excellent mechanical protection with minimum bulk.



Cat. No.	Colour	UPC
EPOEFLEX	Black - Electrical Tape	051141054551
EPOEFLEXWHT	White	051141054490
EPOEFLEXBLU	Blue	051141054469
EPOEFLEXYEL	Yellow	051141054506
EPOEFLEXGRN	Green	051141054476
EPOEFLEXRED	Red	051141054483
EPOEFLEXORG	Orange	051141054537
EPOEFLEXBRN	Brown	051141054513
EPOEFLEXGRY	Grey	051141054520

- Indoor or outdoor applications
- Above or below grade applications
- Temperature rating at 80°C
- Breaking strength at 17 In/in
- Harnessing of wires and cables
- Primary electrical insulation for all wire and cable splices rated up to 600 volts - Black only
- Protective jacketing for high voltage cable splices and repairs
- Black electrical tape is CSA approved



Chain

Cat. No.	Trade Size	Length	Finish	Max. Load Limit	Wt./100 ft	UPC
EPOCHAIN10200FT	10T	200 ft	Bright	47 lb	13 lb	771624050312
EPOCHAIN10250FT	10T	250 ft	Bright	47 lb	13 lb	771624050329
EPOCHAIN1050FT	10T	50 ft	Bright	47 lb	13 lb	771624050305
EPOCHAIN12300FT	12	300 ft	Bright	29 lb	8 lb	771624051135
EPOCHAIN1250FT	12	50 ft	Bright	29 lb	8 lb	771624051104
EPOCHAIN2100FT	2	100 ft	Zinc Plated	115 lb	7-1/2 lb	771624053115
EPOCHAIN3100FT	3	100 ft	Zinc Plated	90 lb	5-3/4 lb	771624053207
EPOCHAIN4100FT	4	100 ft	Zinc Plated	70 lb	4-1/2 lb	771624302169
EPOCHAIN4250FT	4	250 ft	Zinc Plated	70 lb	4-1/2 lb	771624302251
EPOCHAIN4300FT	4	300 ft	Zinc Plated	70 lb	4-1/2 lb	771624053313



Cat. No.	Description	Wire Diameter	Approx. Length	UPC
EPOHOOKFIXTURELOOP1	Fixture Hook Loop	0.135"	2-1/2"	771624133008



Cat. No.	Description	UPC
EPOHOOKM10	M10 Screw Hook	771624131301
EPOHOOKM12	M12 Screw Hook	771624131400
EPOHOOK105S	105-S Hooks	771624130618



Anti Short Bushings

- CSA approved
- UL approved
- High impact plastic

Cat. No.	Description	Pieces per Bag	UPC
EPOANTI0	#0 Anti Short Bushing	35	625602010358
EPOANTI1	#1 Anti Short Bushing	35	625602011355
EPOANTI2	#2 Anti Short Bushing	35	625602012352
EPOANTI3	#3 Anti Short Bushing	20	625602013205
EPOANTI4	#4 Anti Short Bushing	16	625602014165

	Size of Flexible Aluminum or Steel Conduit	Size of Armoured Cable*
EPOANTI0	5/16"	4-14, 3-14, 2-14, 3-12, 2-12
EPOANTI1	3/8"	4-12, 4-10, 3-10, 2-10, 1/4"
EPOANTI2	7/16"	3-8, 2-8, 1-3, 1-2, 7/16"
EPOANTI3	1/2"	4-8, 3-6, 2-6, 1-1, 1/1-0, 1/2-0
EPOANTI4	3/4"	4-6, 4-4, 3-4, 3-3, 3-3, 2-4, 2-3, 2-2, 1/3-0, 1/4-0, 1/250MCM

*The above recommendations are calculated from specific dimensions for AC-90 and ACWU-90 with X-link insulation



Twine

- Non-fraying twine ideal for pulling cable
- White plastic twine
- 100% polypropylene
- Average tensile strength: 180 lb.
- Average knot strength: 110 lb.



Cat. No.	Description	UPC
EPOTWINE500	500 ft ball	778307001203
EPOTWINE7000	7,000 ft box	778307000602



Enclosures

Screw Cover (D-Box)



Application

Designed for use as a junction box and pull box in commercial and general industrial applications.

Construction

- 16 gauge or 14 gauge steel
- Flat, removable covers fastened with plated steel screws
- Unique keyhole screw slots in the cover permit removal of the cover without extracting the screws
- Various sizes of easily removable concentric knockouts on all four sides
- Mounting holes on back of box
- Provision for grounding

Finish

ANSI 61 gray powder paint finish inside and out over steel

Industry Standards

NEMA/EEMAC Type 1
CSA File No. 235537: Type 1
RoHS compliant

Cat. No.	Box Size	Number of Cover Screws	Box Weight	UPC
	A x B x C in (mm)			
EPOD6X6X3	6 x 6 x 3 (152 x 152 x 76)	2	2.60 lb	783510165383
EPOD6X6X4	6 x 6 x 4 (152 x 152 x 102)	2	3.02 lb	783510165253
EPOD8X8X4	8 x 8 x 4 (203 x 203 x 102)	4	4.50 lb	783510165260
EPOD10X10X4	10 x 10 x 4 (254 x 254 x 102)	4	6.28 lb	783510165284
EPOD12X12X4	12 x 12 x 4 (305 x 305 x 102)	4	8.38 lb	783510165577
EPOD6X6X6	6 x 6 x 6 (152 x 152 x 152)	2	3.84 lb	783510165376
EPOD8X8X6	8 x 8 x 6 (203 x 203 x 152)	4	5.56 lb	783510165338
EPOD10X10X6	10 x 10 x 6 (254 x 254 x 152)	4	7.62 lb	783510165345
EPOD12X12X6	12 x 12 x 6 (305 x 305 x 152)	4	9.86 lb	783510165314
EPOD16X16X6	16 x 16 x 6 (406 x 406 x 152)	4	15.34 lb	783510165321
EPOD18X18X6	18 x 18 x 6 (457 x 457 x 152)	4	18.00 lb	783510165352
EPOD24X24X6	24 x 24 x 6 (610 x 610 x 152)	4	36.00 lb	783510165369
EPOD12X12X8	12 x 12 x 8 (305 x 305 x 203)	4	11.54 lb	783510165420

Hinged Cover (E-Box)



Application

Designed for use as surface - mounted junction box, service box, switch box, and cutout box.

Construction

- 16 gauge or 14 gauge steel
- Butt hinges
- Various sizes of easily removable concentric knockouts on all four sides
- Mounting holes on back of box
- Provision for grounding

Finish

ANSI 61 gray polyester powder paint finish inside and out over phosphatized surfaces

Industry Standards

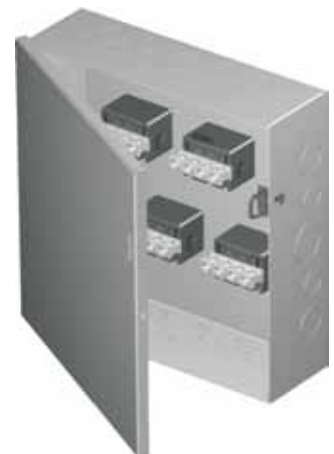
NEMA/EEMAC Type 1
CSA File No. 235537: Type 1
RoHS compliant

Cat. No.	Box Size	Box Weight	UPC
	A x B x C in (mm)		
EPOE6X6X4	6 x 6 x 4 (152 x 152 x 102)	3.40 lb	783510165130
EPOE8X8X4	8 x 8 x 4 (203 x 203 x 102)	4.90 lb	783510165147
EPOE10X10X4	10 x 10 x 4 (254 x 254 x 102)	6.96 lb	783510165161
EPOE12X12X4	12 x 12 x 4 (305 x 305 x 102)	8.90 lb	783510165154
EPOE8X8X6	8 x 8 x 6 (203 x 203 x 152)	6.56 lb	783510165222
EPOE10X10X6	10 x 10 x 6 (254 x 254 x 152)	8.32 lb	783510165215
EPOE12X12X6	12 x 12 x 6 (305 x 305 x 152)	10.46 lb	783510165178
EPOE16X16X6	16 x 16 x 6 (406 x 406 x 152)	16.02 lb	783510165185
EPOE18X18X6	18 x 18 x 6 (457 x 457 x 152)	18.76 lb	783510165239
EPOE24X24X6	24 x 24 x 6 (610 x 610 x 152)	37.00 lb	783510165246

Meter Cabinets & Splitter Troughs

• Stocked in Nema / EMAC 1

Cat No.	Description	UPC
EPOT2103	EPOT2103 SPL TROUGH 2FT 125A 3W EEMAC 1	071768006542
EPOT3103	EPOT3103 SPL TROUGH 3FT 125A 3W EEMAC 1	071768006597
EPOT3104	EPOT3104 SPL TROUGH 3FT 125A 4W EEMAC 1	071768006603
EPOT3203	EPOT3203 SPL TROUGH 3FT 225A 3W EEMAC 1	071768006610
EPOT3204	EPOT3204 SPL TROUGH 3FT 225A 4W EEMAC 1	071768006627
EPOT3403	EPOT3403 SPL TROUGH 3FT 400A 3W EEMAC 1	071768006634
EPOT4103	EPOT4103 SPL TROUGH 4FT 125A 3W EEMAC 1	071768006665
EPOT4104	EPOT4104 SPL TROUGH 4FT 125A 4W EEMAC 1	071768006672
EPOT4203	EPOT4203 SPL TROUGH 4FT 225A 3W EEMAC 1	071768006689
EPOT4204	EPOT4204 SPL TROUGH 4FT 225A 4W EEMAC 1	071768006696
EPOT4403	EPOT4403 SPL TROUGH 4FT 400A 3W EEMAC 1	071768006702
EPOT4404	EPOT4404 SPL TROUGH 4FT 400A 4W EEMAC 1	071768006719
EPOT5403	EPOT5403 SPL TROUGH 5FT 400A 3W EEMAC 1	071768006801
EPOT6403	EPOT6403 SPL TROUGH 6FT 400A 3W EEMAC 1	071768006887
EPOT6404	EPOT6404 SPL TROUGH 6FT 400A 4W EEMAC 1	071768006894
EPOT6603	EPOT6603 SPL TROUGH 6FT 600A 3W EEMAC 1	071768006900
EPOT6604	EPOT6604 SPL TROUGH 6FT 600A 4W EEMAC 1	071768006917
EPOMCHQ303010	EPOMC303010Q 30X30X10 M CABINET QUE SPEC	071768133705
EPOMCHQ363612	EPOMC363612Q 36X36X12 M CABINET QUE SPEC	071768133712
EPOMCHQ484812	EPOMC484812Q 48X48X12 M CABINET QUE SPEC	071768133729
EPOMC303010	EPOMC303010 30X30X10 METER CABINET	071768089965
EPOMC363612	EPOMC363612 36X36X12 METER CABINET	071768089972
EPOMC484812	EPOMC484812 48X48X12 METER CABINET	071768089989
EPOB103	EPOB103 SPLITTER BOX 125A 3W EEMAC 1	071768001493
EPOB104	EPOB104 SPLITTER BOX 125A 4W EEMAC 1	071768001509
EPOB203	EPOB203 SPLITTER BOX 225A 3W EEMAC 1	071768001516
EPOB403	EPOB403 SPLITTER BOX 400A 3W EEMAC 1	071768001530
EPOB404	EPOB404 SPLITTER BOX 400A 4W EEMAC 1	071768001547
EPOB73	EPOB73 SPLITTER BOX 70A 3W EEMAC 1	071768001578
EPOBRC125	EPO125BLK 125A SPLITTER TROUGH BLOCK	071768019856
EPOBRC225	EPO225BLK 225A SPLITTER TROUGH BLOCK	071768019863



Wire Marker Books

ElectriPro pocket-sized Pre-Printed Wire Marker Books are designed for quality, value, durability, and easy use. Choose from the most popular legends including numbers, letters and special symbols. These marker books are printed on all-purpose vinyl coated cloth tape that is designed to resist abrasion, oil, water, and dirt.

- High quality
- Great value
- Vinyl cloth
- Pocket size books
- 10 pages of markers per book
- Handy reference chart on inside cover



Cat. No.	Contents	QTY per Book	UPC
EPOMB045	1-45	10	051141079318
EPOMB4690	46-90	10	051141061801
EPOMBAZ	A-Z	15	051141061818
	+	8	
	-	6	
	[Write-on Markers]	21	
EPOMB09LT	0-9	45	051141061825
	L1-L3, T1-T3	15	

NMD Connectors

- Knockout size 1/2" & 3/4"
- 1/2" available in pail of 300 connectors and drum of 13,000 connectors
- 3/4" available in box of 50 connectors
- Self-locking, rugged plastic connector securely holds non-metallic cables
- "Snap-On Design"
- Can be installed in panels, boxes & fixtures
- Does not require tools to install
- Externally adjustable tab, cables can be adjusted quickly and easily after installation
- CSA Approved for: 1/2" --> 14/2, 14/3, 12/2 10/2 AWG or NMD Cables or equivalent diameters
3/4" --> 8/3, 6/3 AWG or NMD Cables of equivalent diameters



Cat. No.	Description	UPC
FIT6003PAIL	1/2" Push-In Box Connector -- Pail of 300	776469112911
FIT6004BOX	3/4" Push-In Box Connector -- Box of 50	776469113000
FIT6003DRUM	1/2 Push-In Box Connector -- Drum of 13,000	776469112935

Cable Tie Mounting Bases

- Foam adhesive backing
- 1" by 1" square
- Loops on all 4 sides for any direction
- Can also be screwed into the surface; 4 perforated holes to screw into
- Natural white colour



Cat. No.	Description	UPC
EPO1X1CTMW	1"x1" Cable Tie Mounting Bases, Natural White -- 20 Pack	000000999373

Wire Lube

- CSA approved
- Polymer-based lubricant that offers lower friction and easy pulling
- Compatible with all cable insulation types
- Will not cement itself to the pipe
- Will not breakdown or separate after exposure to heat or cold
- Environmentally safe
- 20°F - 140°F (-5°C - 60°C) rating



Cat. No.	Description	UPC
EPOLUBEGAL	Wire Lube in Gallon Pail	783310105916
EPOLUBEQT	Wire Lube in Quart Bottle	783310105961

Cable Ties With Mounting Hole

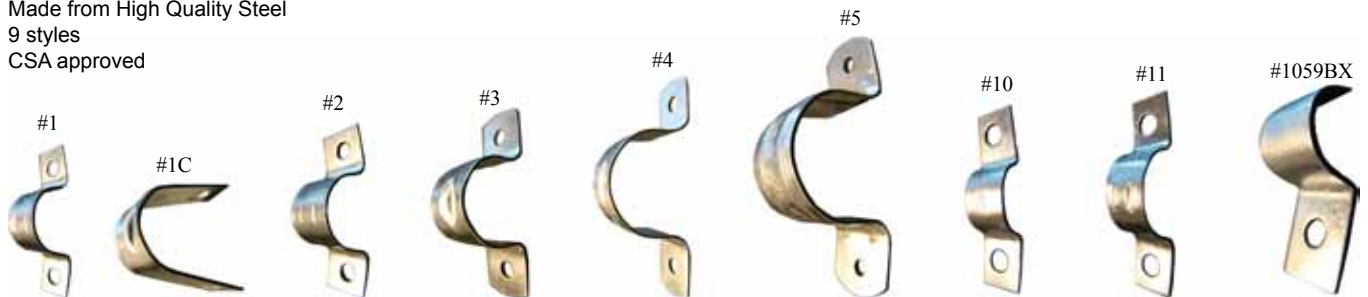
- Indoor (white) and outdoor (black) cable ties
- Made in the USA
- Tensile strength of 50lbs
- 7.5" long
- #10 mounting hole



Cat. No.	Description	UPC
EPOCTI75MHC	Cable Ty 7.5" 50LBS Tensile Strength, #10 Mounting Hole, Indoor Natural Colour, 100 Pak	000001000184
EPOCTI75MHM	Cable Ty 7.5" 50LBS Tensile Strength, #10 Mounting Hole, Indoor Natural Colour, 1000 Pak	000001000191
EPOCTO75MHC	Cable Ty 7.5" 50LBS Tensile Strength, #10 Mounting Hole, Outdoor, Black Colour, 100 Pak	000001000207

Cable Straps

- Made in Canada
- Made from High Quality Steel
- 9 styles
- CSA approved



Cat. No.	Description	Quantity Per Box	NMD-7 Cable Size	Armoured BX Cable Size	UPC
EPOCSTRAP#1	Cable Strap #1	250	14/2 - 12/2; 14/3 - 10/3	14/2 - 14/3	776469100000
EPOCSTRAP#1C	Cable Strap #1C	250	14/2 - 12/2; 14/3 - 10/3	N/A	776469010002
EPOCSTRAP#2	Cable Strap #2	200	14/2 - 12/2; 14/3 - 10/3	14/2; 12/2	776469200007
EPOCSTRAP#3	Cable Strap #3	100	12/2 - 8/2; 12/3 - 8/3	12/2 - 10/2; 12/3 - 10/3	776469300004
EPOCSTRAP#4	Cable Strap #4	100	10/2 - 6/2; 10/3 - 6/3	10/2 - 8/2; 10/3 - 8/3	776469400001
EPOCSTRAP#5	Cable Strap #5	100	8/2 - 6/2; 8/3 - 3/3	8/2 - 4/2; 8/3 - 4/3	776469500008
EPOCSTRAP#10	Cable Strap #10	250	14/2	N/A	776469000102
EPOCSTRAP#11	Cable Strap #11	250	14/2 - 12/2	N/A	776469000119
EPOCSTRAP#1059BX	Cable Strap #1059BX, One-hole Flexible Steel Strap	100	3/8"	N/A	776469115905

Terminals

- Manufactured from seamless tubing
 - High quality design with no seams to split
- Pure electrolytic copper
 - Provides maximum conductivity, low resistance & ductility for excellent crimp forming properties
- Electro-tin plated
 - Provides durable long-lasting resistance to corrosion
- Positive center wire stops
 - Provides for proper depth of wire installation
- Colour-coded in red, blue & yellow
 - Provides easy wire size identification
- CSA & CUL approved
- Rated for 600V, 105°C
- Packs of 15



Product Code	Wire Range	Insulation	Type	Insulation Colour	Stud Size	UPC
EPOFQC10Y250	12-10	VINYL	Quick Disconnect	YELLOW	.250 FQC	621945379046
EPOFT10Y10	12-10	VINYL	Fork	YELLOW	#10 Spade	621945379039
EPOFT10Y6	12-10	VINYL	Fork	YELLOW	#6 Spade	621945378971
EPOFT10Y8	12-10	VINYL	Fork	YELLOW	#8 Spade	621945378988
EPORT10Y10	12-10	VINYL	Ring	YELLOW	#10	621945378919
EPORT10Y8	12-10	VINYL	Ring	YELLOW	#8	621945378933
EPOS10Y	12-10	VINYL	Splice	YELLOW	-	621945378858
EPOS10YHS	12-10	HEAT SHRINK	Splice	YELLOW	-	621945378841
EPOFQC14B250	16-14	VINYL	Quick Disconnect	BLUE	.250 FQC	621945379022
EPOFT14B10	16-14	VINYL	Fork	BLUE	#10 Spade	621945379015
EPOFT14B6	16-14	VINYL	Fork	BLUE	#6 Spade	621945378957
EPOFT14B8	16-14	VINYL	Fork	BLUE	#8 Spade	621945378964
EPORT14B10	16-14	VINYL	Ring	BLUE	#10	621945378896
EPORT14B8	16-14	VINYL	Ring	BLUE	#8	621945378889
EPOS14B	16-14	VINYL	Splice	BLUE	-	621945378834
EPOS14BHS	16-14	HEAT SHRINK	Splice	BLUE	-	621945378827
EPOFQC18R250	22-18	VINYL	Quick Disconnect	RED	.250 FQC	621945379008
EPOFT18R10	22-18	VINYL	Fork	RED	#10 Spade	621945378940
EPOFT18R6	22-18	VINYL	Fork	RED	#6 Spade	621945378926
EPOFT18R8	22-18	VINYL	Fork	RED	#8 Spade	621945378995
EPORT18R10	22-18	VINYL	Ring	RED	#10	621945378872
EPORT18R8	22-18	VINYL	Ring	RED	#8	621945378865
EPOS18R	22-18	VINYL	Splice	RED	-	621945378810
EPOS18RHS	22-18	HEAT SHRINK	Splice	RED	-	621945378803

Gang Vapour Barriers

- Resists passage of water vapour from a region of high vapour pressure to low pressure
- Restricts the rate and volume of water vapour diffusion through the ceilings, walls and floors of a building
- Made from UL recognized PVC material rated to 90°C
- Includes flat flange to allow secure fit to joists
- 4 mil thick

Cat. No.	Description	UPC
EPOVB1	1 GANG VAPOUR BARRIER	771250919946
EPOVB2	2 GANGE VAPOUR BARRIER	771250919953
EPOVB3	3 GANG VAPOUR BARRIER	771250919960
EPOVB4	4 GANG VAPOUR BARRIER	771250919977
EPOVB54	OCTAGANOL BOX VAPOUR BARRIER	771250919984



Duct Seal

- Available in 1 LB and 5 LB
- For sealing around electrical boxes and cable entries
- Non-corrosive
- Non-toxic
- Will not stain or harm hands
- Adheres to most clean dry surfaces
- Paintable after application
- Will not adversely affect plastic materials
- Recommended minimum temperature for installation -5°C (25°F)
- Temperature tolerance range: -34°C to 80°C (-30°F to 175°F)

Cat No.	Description	UPC
EPRODUCTSEAL1LB	Duct Seal 1 LB Bag	836631003130
EPRODUCTSEAL5LB	Duct Seal 5 LB Bag	836631003147



Ceiling Covers

- Metal painted white
- Round Ceiling Cover
- Comes with two 8/32 screws
- 5" diameter

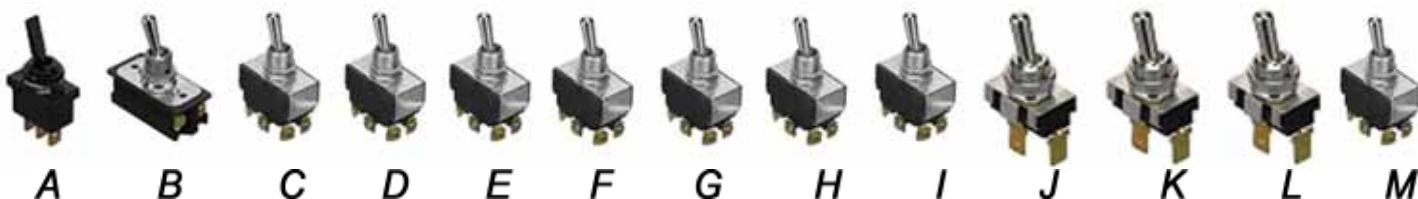
Cat. No.	Description	UPC
EPO9001WH	5" Round Ceiling Cover with Two 8/32 Screws, WHITE	000001001426



Specialty Switches

Heavy Duty Toggle Switches

IMAGE REFERENCE	EPO Part #	Circuit Function			Poles / Throws	Amps 125 VAC	Amps 250 VAC	HP 125-250 VAC	Terminal Type	UPC
A	EPO35180	ON	OFF		SPST	10	5	1/2	QUICK CONNECT .250"/SOLDER	000000999519
B	EPO35126	ON	OFF		DPST	16	8	1	SCREW	000000999458
C	EPO35080	ON	OFF		SPST	20	10*	3/4	SCREW	000000999434
D	EPO35110	ON	OFF	ON	SPDT	20	10*	3/4	SCREW	000000999441
E	EPO35130	ON		ON	SPDT	20	10*	3/4	SCREW	000000999465
F	EPO35146	ON		ON	DPDT	20	10*	1-1/2	SCREW	000000999472
G	EPO35148	ON	OFF	ON	DPDT	20	10*	1-1/2	SCREW	000000999489
H	EPO35150	(ON)	OFF	ON	DPDT	20	10*	1-1/2	SCREW	000000999496
I	EPO35155	(ON)	OFF	ON	SPDT	20	10*	3/4	SCREW	000000999502
J	EPO353005	ON		OFF	SPST	20	10	3/4	QUICK CONNECT .250"	000000999663
K	EPO353010	ON		OFF	SPDT	20	10	3/4	QUICK CONNECT .250"	000000999670
L	EPO353020	ON		OFF	DPDT	20	10*	1-1/2	QUICK CONNECT .250"	000000999687
M	EPO353060	ON		OFF	DPST	20	10*	1-1/2	SCREW	000000999694



Standard Appliance Rocker Switches

IMAGE REFERENCE	EPO Part #	Circuit Function			Poles / Throws	Amps 125 VAC	Amps 250 VAC	HP 125-250 VAC	HP 125 VAC	HP 250 VAC	UPC
N	EPO35691	ON	OFF		SPST	16	10	~	~	~	000000999595
O	EPO35694*	ON	OFF	ON	SPDT	16	10	~	~	~	000000999601
P	EPO353600	ON		OFF	SPST	15	10	3/4	~	~	000000999717
Q	EPO353630	ON		OFF	DPST	15	10	3/4	~	~	000000999724
R	EPO353695*	(ON)	OFF	(ON)	DPDT	15	10	3/4	~	~	000000999731
S	EPO35695*	(ON)	OFF	(ON)	SPDT	16	16	~	~	1	000000999618
T	EPO35688			~	SPST	15	15	~	1/2	1	000000999588



Pushbuttons

IMAGE REFERENCE	EPO Part #	Circuit Function	Poles / Throws	Amps 125 VAC	Amps 250 VAC	Terminal Type	UPC
U	EPO35410*	OFF (ON)	NO SPST	1	~	SD EYELET	000000999526
V	EPO35412*	OFF (ON)	NO SPST	3	1	SD EYELET	000000999533
W	EPO353457	OFF (ON)	NO SPST	6	3	SCREW	000000999700
X	EPO35457*	OFF (ON)	NO SPST	16	16	QUICK CONNECT .250"/SOLDER	000000999540
Y	EPO35491*	ON ON	DPDT	0.5	0.2	PCB / SD EYE	000000999571



U



V



W



X



Y

Miniature Snap Action Switches

IMAGE REFERENCE	EPO Part #	Poles / Throws	Amps 125 / 250 VAC	Amps 125 VDC	Amps 250 VDC	HP 125 / 250 VAC	UPC
Z	EPO35846*	SPDT	10	1/2	1/4	1/3	000000999656
AA	EPO35840	SPDT	15	1/2	1/4	1/2	000000999625
BB	EPO35842*	SPDT	15	1/2	1/4	1/2	000000999632
CC	EPO35844*	SPDT	15	1/2	1/4	1/2	000000999649



Z



AA



BB



CC

General Snap Action Switches

IMAGE REFERENCE	EPO Part #	Amps 125 / 250 VAC	HP 125 VAC	HP 250 VAC	Terminal Type	UPC
DD	EPO35462	15	3/4	1-1/2	QUICK CONNECT .250"	000000999557
EE	EPO35464	15	3/4	1-1/2	QUICK CONNECT .250"	000000999564



DD



EE

Switch & Toggle Accessories

IMAGE REFERENCE	EPO PART#	DESCRIPTION	UPC
FF	EPO35060	T HANDLE TOGGLE SWITCH BOOT -- THREAD SIZE: 15/32-32	000000999427
GG	EPO765003*	PUSHBUTTON CAP	000000999410
HH	EPO82468	SWITCH GUARD -- FLIP COVER SWITCH GUARD	000000999403
II	EPO81271*	HANDLE EXTENSION	000000999762
JJ	EPO81272*	HANDLE EXTENSION	000000999380
KK	EPO81273*	HANDLE EXTENSION	000000999397



FF



GG



HH



II



JJ



KK

Cord Ends

- Push-in terminations eliminate the need to wrap the leads around the terminal screws
- Impact / chemical-resistant nylon casing
- Double wall construction
- Thermoplastic Elastomer (TPE) dust seal surrounds cord to help prevent moisture and contaminants from entering wiring chamber
- Captive terminal screws are backed out and ready for wiring
- Combination Phillips / slotted terminal and assembly screws
- Wide-rib, non-slip hand grip
- Industrial black matte finish
- Transparent terminal cover with a see-thru window for proper wire terminations
- Amperage, voltage, and NEMA line number imprinted on face for easy identification
- CSA approved, UL listed, UL Fed Spec listed, CE
- NEMA 5-15



Cat. No.	Description	UPC
EPOPLUG15A	Plug - 15A 125V	781786410329
EPOCONN15A	Connector - 15A 125V	781786410336

GFCI - LED

- 15A, 125V duplex
- UL943 compliant (new UL requirements)
- LED "end of life" indicator
- 4 - 6 mA trip level
- Class A
- CSA & UL approved
- Back and side wired
- Complete with matching wall plate and screws

Cat. No.	Description	Colour	UPC
EPOGFR15W	15A - 125V GFCI - LED	White	805035048160
EPOGFR15I	15A - 125 V GFCI - LED	Ivory	805035048177



Tamper Resistant GFCI

- Tamper resistant
- 15A, 125V duplex
- UL943 compliant (new UL requirements)
- LED "end of life" indicator
- 4 - 6 mA trip level
- Class A
- NEMA 5 - 15
- CSA & UL approved
- Back and side wired
- Complete with matching wall plate and screws

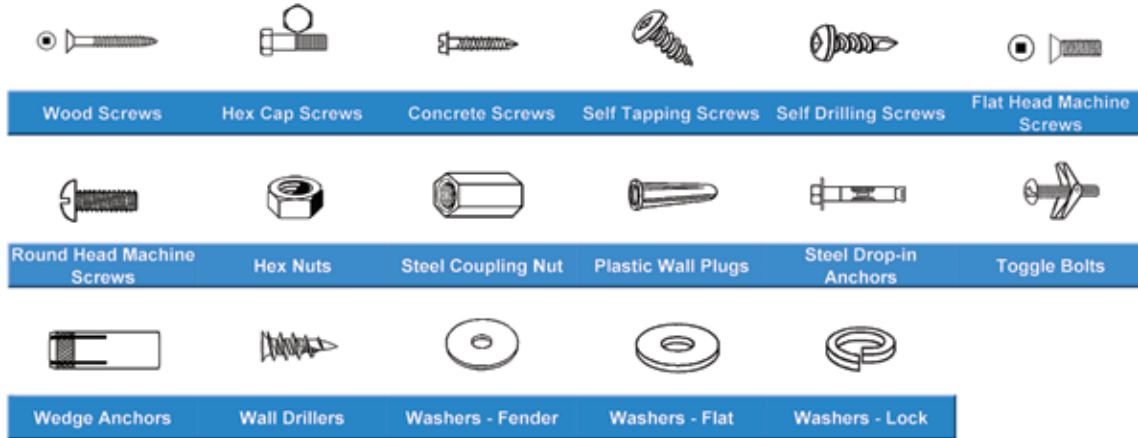


Cat. No.	Description	UPC
EPOGFR/TR15W	15A-125V TR GFCI Duplex Receptacle LED - White	883778219825
EPOGFR/TR15I	15A-125V TR GFCI Duplex Receptacle LED - Ivory	883778219818

Fasteners

- Various sizes available
- Available in low quantity boxes and high quantity plastic jars

**NOTE: Additional fasteners not listed may also be available*



Conduit Accessories

Nipples

	Closed	1-1/2"	2"	2-1/2"	3"	3-1/2"	4"	5"	5-1/2"	6"
1/2"	X	X	X	X	X	X	X	X	X	X
3/4"	X		X	X	X	X	X	X	X	X
1"	X		X	X	X	X	X	X		X
1-1/4"	X		X	X	X	X	X	X		X
1-1/2"	X		X	X	X	X	X	X		X
2"	X			X	X	X	X	X		X
2-1/2"	X				X	X	X	X		X
3"	X				X	X	X	X		X
3-1/2"	X					X	X	X		X
4"	X						X	X		X

Couplings

- Sizes Range from 1/2" to 6"

Rigid Elbows

- Sizes range from 1/2" to 6"
- 45° and 90° bends

EMT Elbows

- Sizes range from 1/2" to 4"
- 45° and 90° bends

Conduit Fittings

- Various sizes available

Pull Elbow
Plastic Bushing
Metal Bushing
3-Piece Coupling
Set Screw Connector
Set Screw Coupling
R/T Coupling
K.O. Seal

2-Hole Strap
LT Connector Zinc
LT Connector
EMT Steel Connector
EMT Steel Coupling
Steel R/T Connector
Steel R/T Coupling
Reducing Washer

1-Hole Strap
Chase Nipple
Ground Bushing
Bx Connector
Romex Connector
Duplex Connector
90° Bx Connector
Locknut



General Info

Prices and products are subject to change without notice

T-Drive

Catalogue updates can be found on the ElectriPro T-Drive

If you currently do not have access to this network folder, or need help in accessing it please follow these instructions:

- Right click on the My Computer icon (this should be on your desktop or in your Start menu)
- Select "Map Network Drive" from menu
- Select "T:" from the Drive menu
- Beside "Folder" type the following: \\mdcc1str02\Rexel\Data\Common\ElectriPro
- Make sure there is a check beside "Reconnect at logon"
- Click Finish
- This procedure only needs to be done once, after which the icon for the ElectriPro drive will be in your My Computer folder with your other Network Drives

For Rexel Employees

Questions / Comments - Contact your manager or:

ElectriPro@rexel.ca